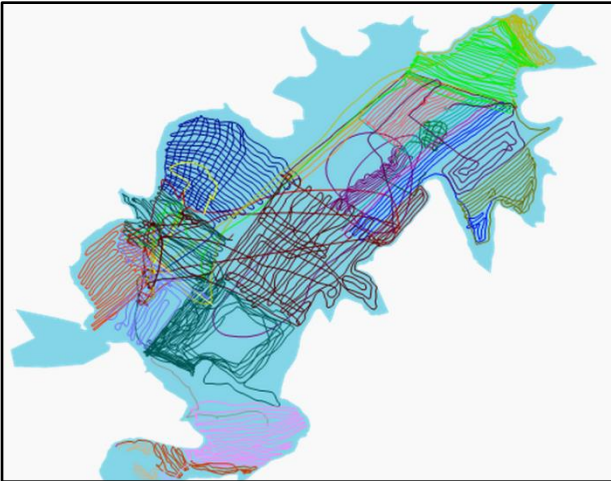


Custom Lake Mapping – Easy as One, Two, Three

By Bernard Williams, Outdoor Writer

Sonar Devices have the ability to record and save the sonar readings to an SD card for custom mapping. Lowrance offer a neat way to create these maps with their Insight Genesis and the Insight Planner. Technology has changed so drastically and it's changing every day. With this new sonar technology, you and I can now create our own maps of lake contours. Most of the lake map chips available today were mostly derived for old paper maps of lakes. Vendors took these old lake contours and digitized them and copied them to a SD card.

With Insight Genesis Custom Maps you can create customized maps from your own survey data for free. It's as



The above photo shows the tracks used to generate the custom lake map.

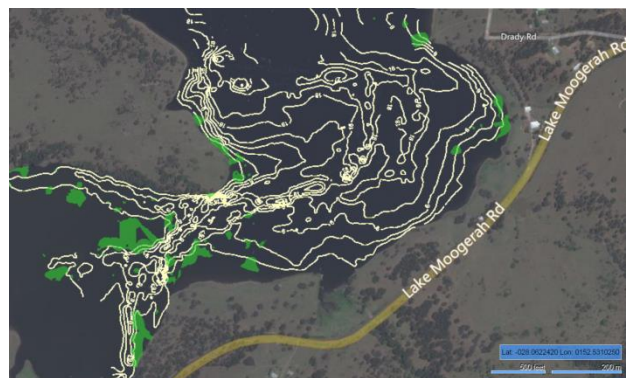
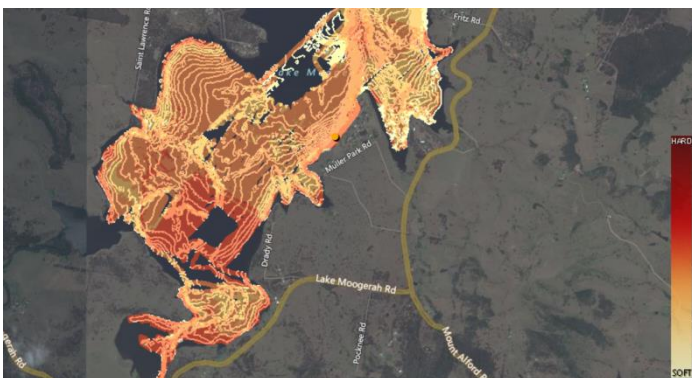
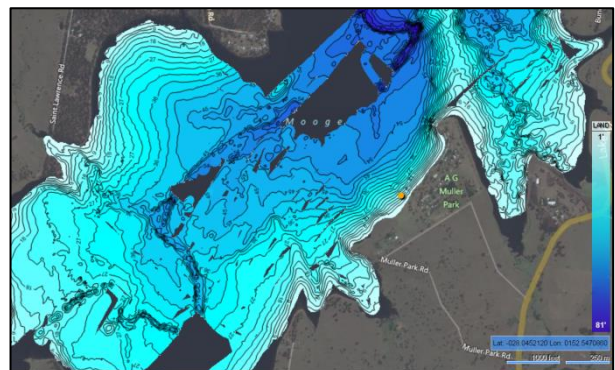
easy as uploading a sonar log from your Lowrance chart plotter to the Insight Genesis web site. Within minutes you'll received a link to view your customized contour map. With a subscription upgrade you are allowed to download maps to use on your Lowrance device. It allows you to overlay vegetation, bottom composition and access community data via the Social Mapping Layer. For anglers skilled at reading maps, this could provide a huge advantage during tournament fishing. In the above example the user mapped a complete lake and uploaded it to the Insight Genesis Social Map. You can also download the custom map to your chart plotter.

The map created below has a few holes; Insight Genesis

allows you to go back and map the holes and merge the data to create complete maps. The map created is a true 1' contour map that completely accurate.

Vegetation data is also included as a map layer. For fishermen that want to find lake vegetation, this is an ideal tool to quickly locate these areas.

If soil composition is important, there's a map layer for that. You can easily find hard or soft bottoms in all mapped areas.



You can also add your waypoints to your custom map for places of interest. To me creating my custom maps is kind of like making your own jigs. It feels so good when you catch a fish with either.

Follow along as I take you step by step in the map creation process. It's not a complicated procedure. If you miss a step simply backup to the last step and follow the instructions closely.

1 - Data Collection

- Data will be collected using SD cards and Lowrance HDS GEN2 with built-in Broadband and Structure Scan Sounder.
- I recommend carrying or storing two 4GB+ SD cards to mitigate lost, damaged, corrupt or full cards. I recommend logging no longer than two hours per file.
- Note the depth of the transducer under the surface of the water. The difference can be applied as a post-process offset

Recommended Boat Path for Data Collection

- Drive the boat in a crisscross design of the recorded area and if possible with one transect looping the near shore area.
- Minimum spacing between paths should be based on size of water body:
- By default Insight Genesis creates 36 foot grid cells and will create blank interpolated outputs greater than 75 feet from the trip path.

Size of the Body of Water	Minimum Spacing
<5 Acres	15 Feet
5-10 Acres	30 Feet
10-20 Acres	45 Feet
20-30 Acres	60 Feet
>30 Acres	120 Feet

2 - Upload

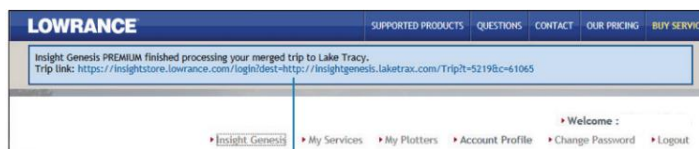
- Once your sonar log is recorded, the files can be saved to your computer or uploaded directly from the SD card.
- Files are uploaded using the Insight Genesis Upload Tool that is downloaded from the Insight Genesis tab in your Insight Genesis account.
- Once installed, the Upload Tool will show an icon on your computer desktop. Double-click this icon to launch the tool.



- After launching the Upload Tool, click on the "Select Files" button to select the collected log files (*.slg or *.SI2 files) that you have on your SD card or have saved to your computer.
- Time required to upload and process the files will depend on a number of factors including the size of the file (distance traveled, data points collected), size of the area surveyed, and internet connection speed. An email will be sent to you once processing is complete, generally within 30 minutes after the upload has completed.

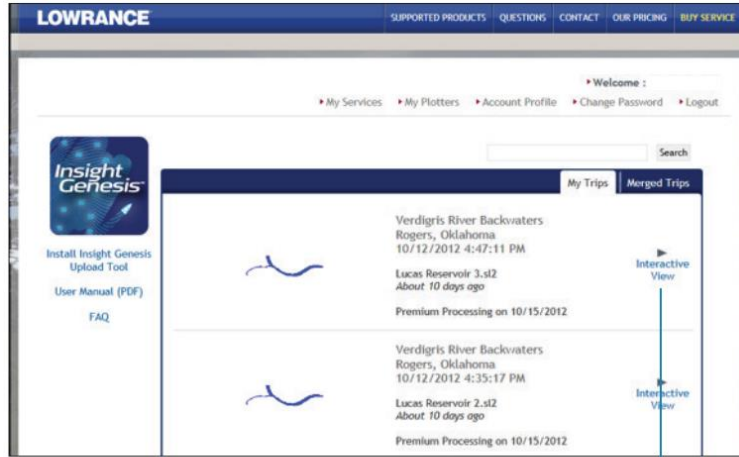
View Map

When you are ready to view your map you will be notified 3 different ways. You will receive an e-mail, a notification will appear at the top of your Insight Genesis account and your map will be viewable under your Insight Genesis tab.



Map Notification

Once inside the Insight Genesis Dashboard you will see a list of all the trips that have been uploaded to your account, with the most recent at the top.

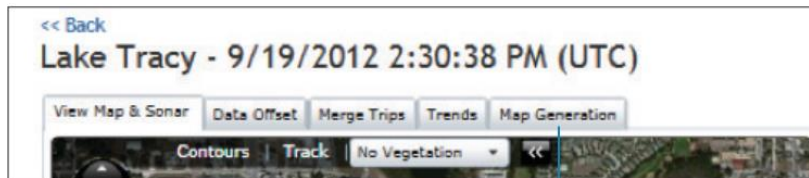


To View Map, Click on Interactive View

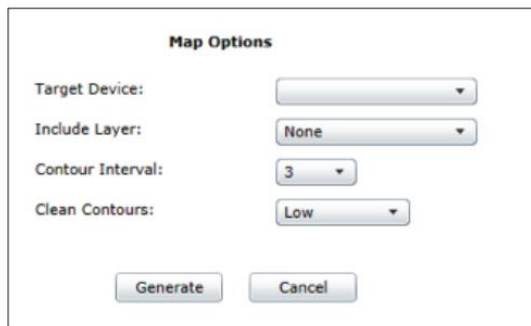
3 - Download

In order to take a map to your boat, follow the prompts to Save File after you have put an empty SD card in your computer's card reader. Save the file to the SD card. Make sure there is only a single AT5 file on the SD card, since multiple AT5s on an SD card can cause Read Errors on some Lowrance units.

To create a Map for use on your chart plotter (*.AT5), follow the prompts to choose from the available choices, based on subscription level, and then click Generate. Within a couple of minutes the process will complete. Click on the Save button and a dialog box will appear.



To Create a Map for use on Chartplotter



Once the file is on the SD card, double click the file you created (*.exe) and Extract the files to the same SD chip. Now the map is ready to be inserted in your Lowrance chart plotter. Once the map is in the chart plotter the unit will automatically open the map. Now that was easy. Good Luck. **Bernard**